

HOW TO: Install Bar Code Font

If MIETrak is missing the Bar Code or there is only numbers where the bar code should be, this guide will walk you through the installation of the C39HrP36d Font

1. Go to start 

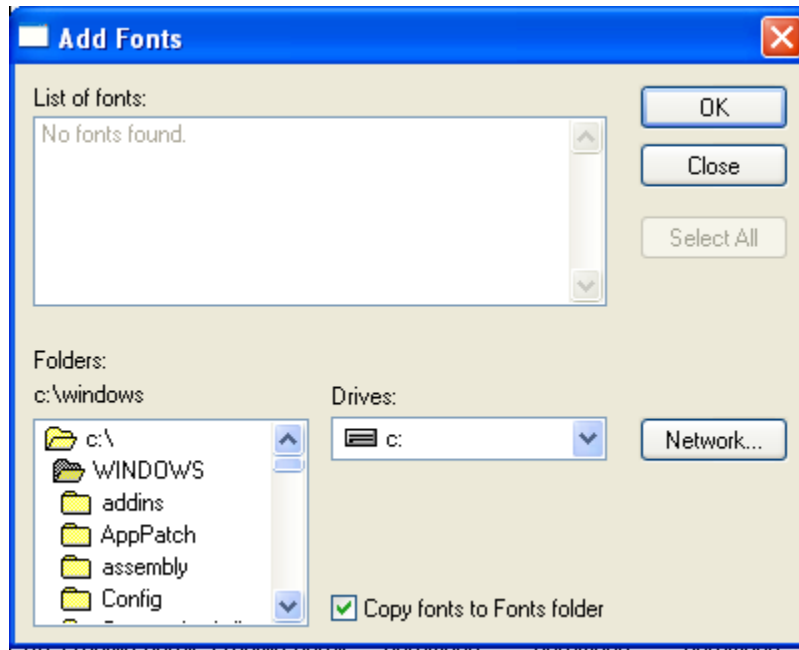
2. Go to Control Panel 

3. Go to Fonts  Fonts

4. Verify that font C39HrP36d  (TrueType) is in the Fonts folder

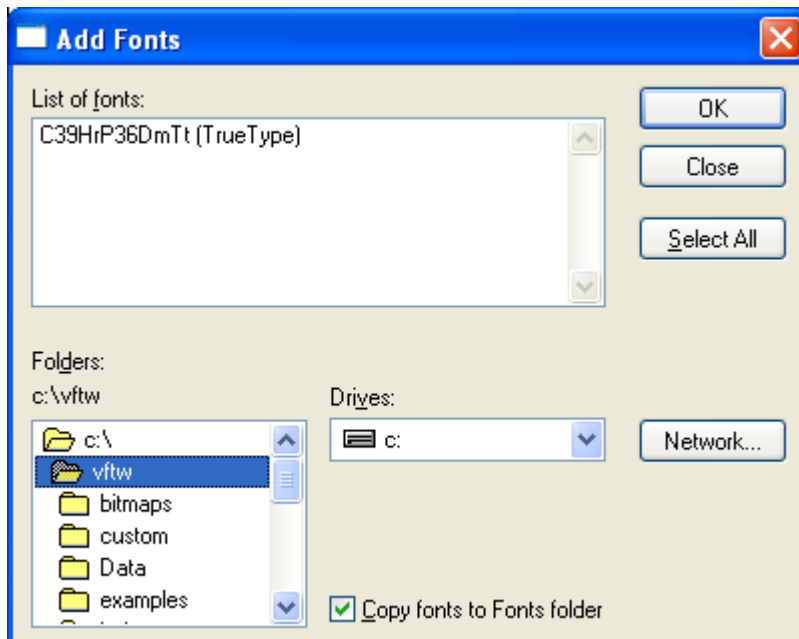
5. Go to File Install New Font 

6. Add Fonts window will appear

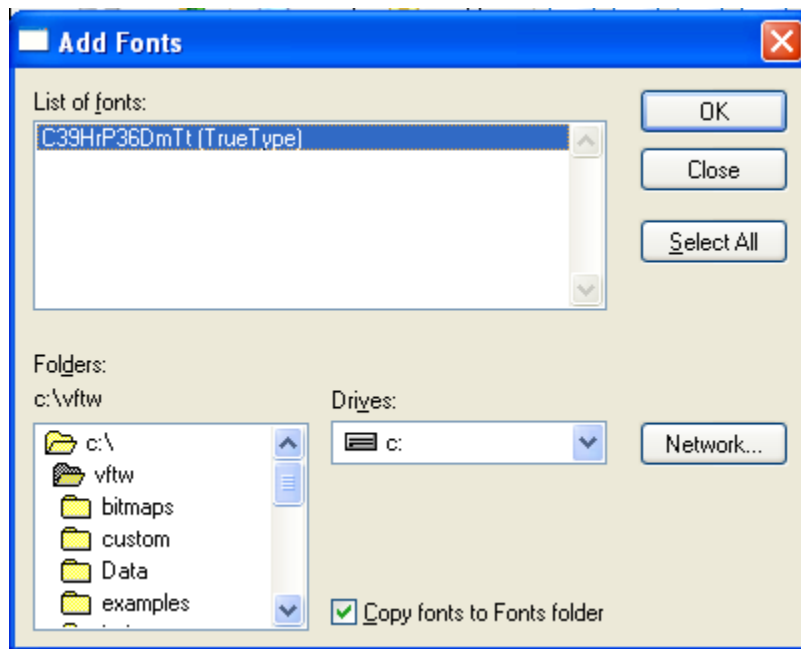


7. Select the drive where your vftw folder is located

8. Click on the vftw folder (Notice that the C39HrP36d is list in the List of fonts text box)



9. Highlight C39hr36DmTT



10. Click on the OK  button

11. The Font will begin to install

